

# Watchin' the Wabash

A publication of the Upper Wabash River Basin Commission

December 2015

The Upper Wabash River Phase 2 watershed management plan is available at local Surveyor and SWCD offices, or can be viewed at the UWRBC website: <http://uwrbc.org>

The Upper Wabash River Basin Commission meets every 2 months at 8:00 a.m. at the Wells Co. Government Annex 223 W. Washington St., Bluffton, IN.

## UWRBC MEETING SCHEDULE

February 9, 2016  
 April 12, 2016  
 June 14, 2016  
 August 9, 2016  
 October 11, 2016  
 December 13, 2016

The UWRBC Steering Committee meets every 2 months at 12 noon at the USDA Service Center, 117 W. Harvest Rd., Bluffton, IN.

## STEERING COMMITTEE MEETING SCHEDULE

January 26, 2016  
 March 22, 2016  
 May 24, 2016  
 July 26, 2016  
 September 27, 2016  
 November 22, 2016

The public is encouraged and welcome to attend.

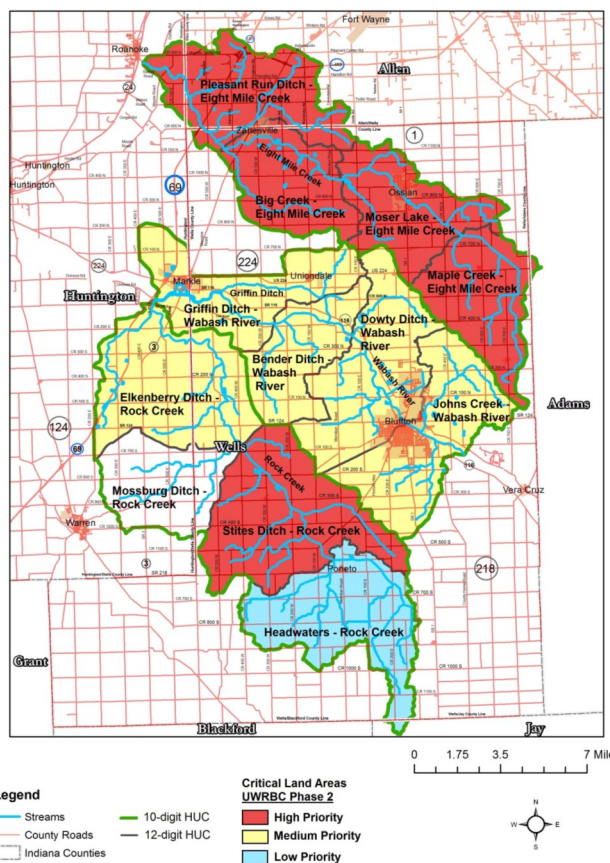
## Upper Wabash River-Phase 2 Cost-Share Program

This voluntary cost-share program provides funding to implement best management practices (BMPs) in the Eight Mile Creek, Wabash River, and Rock Creek subwatersheds.

Practices must be installed in a **priority critical land area** of the Upper Wabash River Phase 2 project. BMPs eligible for cost-share funds were selected to reduce erosion and sediment, as well as nutrient and *E. coli* concentrations in the streams and river. Habitat restoration and floodplain management are additional benefits provided by the BMPs.

This cost-share program will provide 75% of the cost of implementing the BMPs or the NRCS EQIP payment rate, whichever is less. Nutrient management plans will be funded up to 90% of the cost or the NRCS EQIP payment rate, whichever is less.

### Eight Mile Creek, Wabash River and Rock Creek subwatersheds



**To Apply** - Contact the UWRBC Watershed Coordinator. Applications will be ranked based on site and BMP specific conditions and funded based on this priority ranking process. Cost-share funds are reimbursed approximately 90 days after the BMP has been installed in compliance with accepted standards AND all invoices have been submitted to the UWRBC Watershed Coordinator.

**Maintaining BMPs** - Participants will be responsible for the maintenance of all BMPs. Vegetative practices will be maintained for 5 years, except for cover crops which will be maintained for 1 year. Structural practices will be maintained for 10 years.

**Practice Payment Limits and Payment Caps** - Some practices have payment limits (page 2). A payment cap for each participant will be \$9,000 for a single BMP or \$14,000 when implementing multiple BMPs.

# UPPER WABASH RIVER BASIN COMMISSION

117 W. Harvest Road  
Bluffton, IN 46714

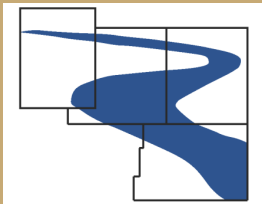
## Mission Statement

To provide regional leadership and promotion of flood prevention and control, soil and water conservation, and related resource management through a coordinated and comprehensive planning and implementing approach in which projects of the Commission will not adversely affect landowners within the watershed.

## The Upper Wabash River Basin Commission

*This project has been funded wholly or in part by the US EPA under assistance agreement number C9975482-14 to IDEM.*

*The contents of this document do not necessarily reflect the views and policies of the EPA, nor does mention of trade names or commercial products constitute endorsement or recommendation for use.*



A cooperation of local government established in 2001 under IC 14-30-4.  
Huntington, Wells, Adams and Jay Counties

## Cost-Share Program ~ Eligible BMPs

### NRCS Practice (Code)

Access Control (472) #  
Access Road (560) # ±  
Comprehensive Nutrient Mgmt. Plan (102)  
Conservation Cover (327)  
Cover Crops (340)  
Critical Area Planting (342)  
Diversion (362)  
Drainage Water Management (554)  
Fence (382) # ±  
Field Border (386)  
Filter Strip (393)  
Grade Stabilization Structures (410)  
Grassed Waterway (412)  
Heavy Use Area Protection (561)  
Integrated Pest Management (595) ±  
Lined Waterway or Outlet (468) ±  
Livestock Pipeline (516) # ±  
Mulching (484) ±  
Nutrient Mgmt. (& waste utilization) (590)  
Open Channel – 2-Stage Ditch (582)  
Prescribed Grazing (528)

### NRCS Practice (Code)

Residue & Tillage Mgmt., Mulch Till (345)  
Residue & Tillage Mgmt., No Till/  
Strip Till (329)  
Riparian Forest Buffer (391)  
Riparian Herbaceous Cover (390)  
Roof Runoff Structure (*rain barrels*) (558)  
Stormwater Runoff Control  
(*rain gardens*) (570)  
Trails and Walkways (575)  
Stream Crossing (578) # ±  
Streambank and Shoreline Protection (580)  
Structure for Water Control (587) ±  
Subsurface Drain (606) ±  
Tree and Shrub Establishment (612)  
Underground Outlet (Blind Inlet) (620) ±  
Water and Sediment Control Basin (638)  
Watering Facility (614) # ±  
Wetland Restoration (657), Creation (658),  
and Enhancement (659)

# Livestock exclusion practices.

± Component of other approved practice.

## Practice Payment Limits

Conservation Practice	Payment Limit	Conservation Practice	Payment Limit
Access Control (472)	\$2,050	Residue & Tillage Mgmt. - Mulch Till (345)	\$2,000
Access Road (560)	\$812	Residue & Tillage Mgmt. - No Till/Strip Till (329)	\$7,500
Cover Crops (340)	\$9,000	Roof Runoff Structure (558)	\$9,000
Heavy Use Area (561)	\$8,000	Roof Runoff Structure - Rain Barrels (558)	\$50
Nutrient Management (incl. Waste Utilization) (590)	\$14,000 (\$7,500)	Equipment Modifications	\$7,500
Open Channel - 2-Stage Ditch (582)	\$9,000		

### The UWRBC

The UWRBC includes the area in Adams, Jay, Wells and Huntington counties that is drained by the Wabash River. The voting members are the County Commissioners, the County Surveyor, and the Soil and Water Conservation District Chair or their appointed representatives from the four counties.

### For more information contact:

**Stacia Henderson**  
UWRBC Watershed Coordinator

**Phone: 260/273-0972**

**E-mail:**

**shenderson@adamswells.com**