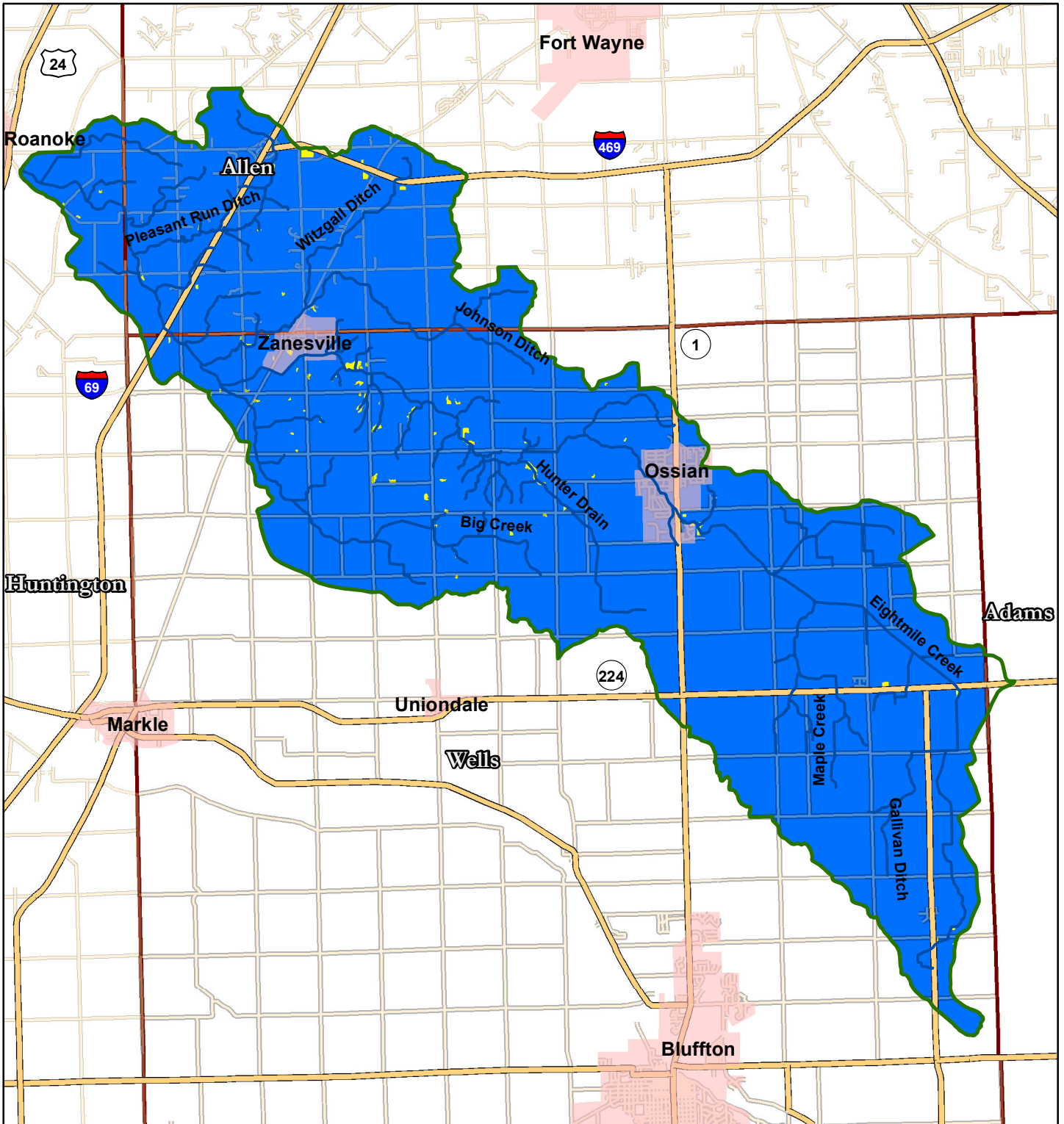


Septic System Suitability of Eightmile Creek, 0512010109



Legend

- Eightmile Creek. 0512010109
 - Streams
 - Populated Areas
 - Indiana Highways
 - Wells Roads
 - Huntington Roads
 - Allen Roads
 - Indiana Counties (100k)
- | | |
|--|-------------------|
| | 117, Very limited |
| | 117, Not rated |
- Wells Septic**
- | | |
|--|-------------------|
| | 117, Very limited |
| | 117, Not rated |
- Huntington Septic**
- | | |
|--|-------------------|
| | 117, Very limited |
| | 117, Not rated |
- Allen Septic**

